

ASTODIA®

DIAPHANOSCOPE FOR TRANSILLUMINATION

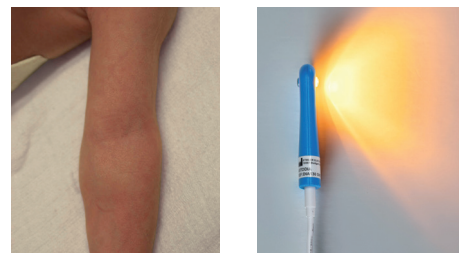
The ASTODIA diaphanoscope makes it easy to find blood vessels for reliable puncture. Likewise, the ASTODIA enables the identification of air or liquid-filled structures deep below the skin's surface (such as a pneumothorax, hydroceles).

The ASTODIA is particularly suitable for paediatrics and especially for premature and newborn babies. Veins and arterial vessels in the extremities can be clearly visualised for puncture access.

The ASTODIA possesses an orange and red high-power LED with adjustable brightness. The orange light enables sharp contrast, and the red light increases the depth of penetration into the tissue. This is useful for diagnosing pneumothorax or hydroceles.

The enhancements provided by ASTODIA make it possible to routinely use transillumination for difficult-to-visualise vascular conditions.

When placed in a sterile cover, the ASTODIA can also be used for procedures such as the placement of central catheters.



Applied parts



DIA120



DIA130



DIA100

Designation

ASTODIA DIA100

Complete set consisting of:

- 1 pcs. DIA120 control unit
- 1 pcs. DIA130 handpiece
- 1 pcs. DIA140 charger

Stihler Electronic GmbH

Julius-Hoelder-Strasse 36
70597 Stuttgart
Germany

Tel: +49 (0) 711 72067-0
Fax: +49 (0) 711 72067-57

www.stihlerelectronic.de
E-mail: info@stihlerelectronic.de



© 2018 STIHLER ELECTRONIC GMBH REV. 01
Technical modifications reserved

STIHLER ELECTRONIC

High quality products for the medical field